

QAQC assay batch report

Report generated on 28-Feb-2025

Batch Information

Laboratory: ALS_BRI - Despatch #: EDGI_18 - Labjob #: AD25025627 - Return date: 27-Feb-2025

Standards Statistics

Standard	Assay Field	# of Analyses above Threshold	# of Analyses below Threshold	# of Analyses outside Warning	# of Analyses outside Error
AMIS0448	Au_Au_ICP21_ppm	2	0	0	0
BEG-24	Au_Au_ICP21_ppm	2	0	0	0
EMOG-17	As_ME_MS61r_ppm	2	0	0	0
EMOG-17	Cu_ME_MS61r_ppm	2	0	0	0
EMOG-17	Nb_ME_MS61r_ppm	2	0	0	0
EMOG-17	Sc_ME_MS61r_ppm	2	0	0	0
EMOG-17	Ti_ME_MS61r_pct	2	0	0	0
GBM321-8	As_ME_MS61r_ppm	2	0	0	0
GBM321-8	Cu_ME_MS61r_ppm	2	0	0	0
GBM321-8	Nb_ME_MS61r_ppm	2	0	0	0
GBM321-8	Sc_ME_MS61r_ppm	2	0	0	0
GBM321-8	Ti_ME_MS61r_pct	2	0	0	0
ISA-24	Au_Au_ICP21_ppm	5	0	0	0
MRCA-21	As_ME_MS61r_ppm	3	0	0	0
MRCA-21	Cu_ME_MS61r_ppm	3	0	0	0
MRCA-21	Nb_ME_MS61r_ppm	3	0	0	0
MRCA-21	Sc_ME_MS61r_ppm	3	0	0	0
MRCA-21	Ti_ME_MS61r_pct	3	0	0	0
NCSDC35011	Sn_ME_XRF15b_pct	3	0	0	0
NCSDC35012	Sn_ME_XRF15b_pct	3	0	0	0
OREAS 242	Au_Au_ICP21_ppm	5	0	0	0
OREAS 507	As_ME_MS61r_ppm	2	0	0	0
OREAS 507	Cu_ME_MS61r_ppm	2	0	0	0
OREAS 507	Nb_ME_MS61r_ppm	2	0	0	0
OREAS 507	Sc_ME_MS61r_ppm	2	0	0	0
OREAS 507	Ti_ME_MS61r_pct	2	0	0	0
OREAS 681	Au_Au_ICP21_ppm	2	0	0	0
STD.OR-230	As_ME_MS61r_ppm	3	0	0	0
STD.OR-230	Au_Au_ICP21_ppm	3	0	1	1
STD.OR-230	Cu_ME_MS61r_ppm	3	0	0	0
STD.OR-230	Nb_ME_MS61r_ppm	3	0	0	0
STD.OR-230	Sc_ME_MS61r_ppm	3	0	0	0
STD.OR-230	Ti_ME_MS61r_pct	3	0	0	0
STD.OR-24d	As_ME_MS61r_ppm	1	0	0	0
STD.OR-24d	Au_Au_ICP21_ppm	1	0	1	1
STD.OR-24d	Cu_ME_MS61r_ppm	1	0	0	0
STD.OR-24d	Nb_ME_MS61r_ppm	1	0	0	0
STD.OR-24d	Sc_ME_MS61r_ppm	1	0	0	0
STD.OR-24d	Ti_ME_MS61r_pct	1	0	0	0
STD.OR-46	As_ME_MS61r_ppm	1	0	1	0
STD.OR-46	Au_Au_ICP21_ppm	1	0	0	0
STD.OR-46	Cu_ME_MS61r_ppm	1	0	1	1

Standards Statistics

Standard	Assay Field	# of Analyses above Threshold	# of Analyses below Threshold	# of Analyses outside Warning	# of Analyses outside Error
STD.OR-46	Nb_ME_MS61r_ppm	1	0	0	0
STD.OR-46	Sc_ME_MS61r_ppm	1	0	0	0
STD.OR-46	Ti_ME_MS61r_pct	1	0	0	0
STD.REN05	Sn_ME_XRF15b_pct	1	0	0	0
STD.REN06	Sn_ME_XRF15b_pct	1	0	0	0
STD.REN07	Sn_ME_XRF15b_pct	2	0	0	0

Blanks Statistics

Standard	Assay Field	# of Analyses above Threshold	# of Analyses below Threshold	# of Analyses outside Warning	# of Analyses outside Error
REN_Blank	As_ME_MS61r_ppm	7	0	0	0
REN_Blank	Au_Au_ICP21_ppm	7	0	0	0
REN_Blank	Cu_ME_MS61r_ppm	7	0	0	0
REN_Blank	Nb_ME_MS61r_ppm	7	0	0	0
REN_Blank	Sc_ME_MS61r_ppm	7	0	0	0
REN_Blank	Sn_ME_XRF15b_pct	7	0	0	0
REN_Blank	Ti_ME_MS61r_pct	7	0	0	0

Duplicates/Repeats Statistics

CheckStage	Assay Field	# of Analyses above Threshold	# of Analyses below Threshold	# of Analyses outside Warning	# of Analyses outside Error
I : Instrument/Masurement Stage	As_ME_MS61r_ppm	3	0	2	1
I : Instrument/Masurement Stage	Au_Au_ICP21_ppm	0	3	0	0
I : Instrument/Masurement Stage	Cu_ME_MS61r_ppm	3	1	2	1
I : Instrument/Masurement Stage	Nb_ME_MS61r_ppm	4	0	0	0
I : Instrument/Masurement Stage	Sc_ME_MS61r_ppm	4	0	0	0
I : Instrument/Masurement Stage	Sn_ME_XRF15b_pct	4	1	2	1
I : Instrument/Masurement Stage	Ti_ME_MS61r_pct	4	0	0	0

Standards Analyses

StandardID	Assay Name	Sample ID	Duplicate Number	Assay Value	Expected Value	% Diff	QAQC Status	Import Status
AMIS0448	Au_Au_ICP21_ppm	St28:AMIS0448_25025627	LAB_STD	1.35				Pending
AMIS0448	Au_Au_ICP21_ppm	St31:AMIS0448_25025627	LAB_STD	1.3				Pending
BEG-24	Au_Au_ICP21_ppm	St07:BEG-24_25025627	LAB_STD	2.51				Pending
BEG-24	Au_Au_ICP21_ppm	St10:BEG-24_25025627	LAB_STD	2.57				Pending
EMOG-17	As_ME_MS61r_ppm	St18:EMOG-17_25025627	LAB_STD	555				Pending
EMOG-17	As_ME_MS61r_ppm	St20:EMOG-17_25025627	LAB_STD	579				Pending
EMOG-17	Cu_ME_MS61r_ppm	St18:EMOG-17_25025627	LAB_STD	7990				Pending
EMOG-17	Cu_ME_MS61r_ppm	St20:EMOG-17_25025627	LAB_STD	8260				Pending
EMOG-17	Nb_ME_MS61r_ppm	St18:EMOG-17_25025627	LAB_STD	14.8				Pending
EMOG-17	Nb_ME_MS61r_ppm	St20:EMOG-17_25025627	LAB_STD	14.8				Pending
EMOG-17	Sc_ME_MS61r_ppm	St18:EMOG-17_25025627	LAB_STD	7.9				Pending
EMOG-17	Sc_ME_MS61r_ppm	St20:EMOG-17_25025627	LAB_STD	7.6				Pending
EMOG-17	Ti_ME_MS61r_pct	St18:EMOG-17_25025627	LAB_STD	0.305				Pending
EMOG-17	Ti_ME_MS61r_pct	St20:EMOG-17_25025627	LAB_STD	0.32				Pending
GBM321-8	As_ME_MS61r_ppm	St04:GBM321-8_25025627	LAB_STD	55.4				Pending
GBM321-8	As_ME_MS61r_ppm	St14:GBM321-8_25025627	LAB_STD	56.3				Pending
GBM321-8	Cu_ME_MS61r_ppm	St04:GBM321-8_25025627	LAB_STD	3650				Pending
GBM321-8	Cu_ME_MS61r_ppm	St14:GBM321-8_25025627	LAB_STD	3600				Pending
GBM321-8	Nb_ME_MS61r_ppm	St04:GBM321-8_25025627	LAB_STD	11.5				Pending
GBM321-8	Nb_ME_MS61r_ppm	St14:GBM321-8_25025627	LAB_STD	10.5				Pending
GBM321-8	Sc_ME_MS61r_ppm	St04:GBM321-8_25025627	LAB_STD	18.9				Pending
GBM321-8	Sc_ME_MS61r_ppm	St14:GBM321-8_25025627	LAB_STD	18.9				Pending
GBM321-8	Ti_ME_MS61r_pct	St04:GBM321-8_25025627	LAB_STD	0.669				Pending
GBM321-8	Ti_ME_MS61r_pct	St14:GBM321-8_25025627	LAB_STD	0.658				Pending
ISA-24	Au_Au_ICP21_ppm	St06:ISA-24_25025627	LAB_STD	0.332				Pending
ISA-24	Au_Au_ICP21_ppm	St09:ISA-24_25025627	LAB_STD	0.317				Pending
ISA-24	Au_Au_ICP21_ppm	St12:ISA-24_25025627	LAB_STD	0.32				Pending
ISA-24	Au_Au_ICP21_ppm	St13:ISA-24_25025627	LAB_STD	0.316				Pending
ISA-24	Au_Au_ICP21_ppm	St19:ISA-24_25025627	LAB_STD	0.317				Pending
MRCA-21	As_ME_MS61r_ppm	St01:MRCA-21_25025627	LAB_STD	18.9				Pending
MRCA-21	As_ME_MS61r_ppm	St02:MRCA-21_25025627	LAB_STD	19.3				Pending
MRCA-21	As_ME_MS61r_ppm	St08:MRCA-21_25025627	LAB_STD	18.6				Pending
MRCA-21	Cu_ME_MS61r_ppm	St01:MRCA-21_25025627	LAB_STD	950				Pending
MRCA-21	Cu_ME_MS61r_ppm	St02:MRCA-21_25025627	LAB_STD	949				Pending
MRCA-21	Cu_ME_MS61r_ppm	St08:MRCA-21_25025627	LAB_STD	912				Pending
MRCA-21	Nb_ME_MS61r_ppm	St01:MRCA-21_25025627	LAB_STD	14.7				Pending
MRCA-21	Nb_ME_MS61r_ppm	St02:MRCA-21_25025627	LAB_STD	15.8				Pending
MRCA-21	Nb_ME_MS61r_ppm	St08:MRCA-21_25025627	LAB_STD	15.2				Pending
MRCA-21	Sc_ME_MS61r_ppm	St01:MRCA-21_25025627	LAB_STD	8.8				Pending
MRCA-21	Sc_ME_MS61r_ppm	St02:MRCA-21_25025627	LAB_STD	8.6				Pending
MRCA-21	Sc_ME_MS61r_ppm	St08:MRCA-21_25025627	LAB_STD	9.1				Pending
MRCA-21	Ti_ME_MS61r_pct	St01:MRCA-21_25025627	LAB_STD	0.358				Pending
MRCA-21	Ti_ME_MS61r_pct	St02:MRCA-21_25025627	LAB_STD	0.376				Pending
MRCA-21	Ti_ME_MS61r_pct	St08:MRCA-21_25025627	LAB_STD	0.356				Pending
NCSDC35011	Sn_ME_XRF15b_pct	St05:NCSDC35011_25025627	LAB_STD	0.759				Pending
NCSDC35011	Sn_ME_XRF15b_pct	St11:NCSDC35011_25025627	LAB_STD	0.75				Pending
NCSDC35011	Sn_ME_XRF15b_pct	St16:NCSDC35011_25025627	LAB_STD	0.748				Pending
NCSDC35012	Sn_ME_XRF15b_pct	St15:NCSDC35012_25025627	LAB_STD	3.99				Pending
NCSDC35012	Sn_ME_XRF15b_pct	St22:NCSDC35012_25025627	LAB_STD	3.94				Pending
NCSDC35012	Sn_ME_XRF15b_pct	St23:NCSDC35012_25025627	LAB_STD	3.85				Pending
OREAS 242	Au_Au_ICP21_ppm	St21:OREAS 242_25025627	LAB_STD	8.43				Pending
OREAS 242	Au_Au_ICP21_ppm	St24:OREAS 242_25025627	LAB_STD	8.48				Pending
OREAS 242	Au_Au_ICP21_ppm	St25:OREAS 242_25025627	LAB_STD	8.93				Pending
OREAS 242	Au_Au_ICP21_ppm	St26:OREAS 242_25025627	LAB_STD	8.69				Pending
OREAS 242	Au_Au_ICP21_ppm	St29:OREAS 242_25025627	LAB_STD	8.68				Pending
OREAS 507	As_ME_MS61r_ppm	St03:OREAS 507_25025627	LAB_STD	46.8				Pending
OREAS 507	As_ME_MS61r_ppm	St17:OREAS 507_25025627	LAB_STD	47.1				Pending
OREAS 507	Cu_ME_MS61r_ppm	St03:OREAS 507_25025627	LAB_STD	6190				Pending
OREAS 507	Cu_ME_MS61r_ppm	St17:OREAS 507_25025627	LAB_STD	6240				Pending
OREAS 507	Nb_ME_MS61r_ppm	St03:OREAS 507_25025627	LAB_STD	12.7				Pending
OREAS 507	Nb_ME_MS61r_ppm	St17:OREAS 507_25025627	LAB_STD	12.8				Pending
OREAS 507	Sc_ME_MS61r_ppm	St03:OREAS 507_25025627	LAB_STD	8.1				Pending
OREAS 507	Sc_ME_MS61r_ppm	St17:OREAS 507_25025627	LAB_STD	8.2				Pending
OREAS 507	Ti_ME_MS61r_pct	St03:OREAS 507_25025627	LAB_STD	0.349				Pending
OREAS 507	Ti_ME_MS61r_pct	St17:OREAS 507_25025627	LAB_STD	0.356				Pending
OREAS 681	Au_Au_ICP21_ppm	St27:OREAS 681_25025627	LAB_STD	0.051				Pending
OREAS 681	Au_Au_ICP21_ppm	St30:OREAS 681_25025627	LAB_STD	0.052				Pending
STD.OR-230	As_ME_MS61r_ppm	RDD285116	STD	17.9	17.3	3.47%		Pending
STD.OR-230	As_ME_MS61r_ppm	RDD285141	STD	18	17.3	4.05%		Pending
STD.OR-230	As_ME_MS61r_ppm	RDD285191	STD	17.6	17.3	1.73%		Pending
STD.OR-230	Au_Au_ICP21_ppm	RDD285116	STD	0.343	0.337	1.78%		Pending
STD.OR-230	Au_Au_ICP21_ppm	RDD285141	STD	0.187	0.337	-44.51%	Error	Pending
STD.OR-230	Au_Au_ICP21_ppm	RDD285191	STD	0.329	0.337	-2.37%		Pending
STD.OR-230	Cu_ME_MS61r_ppm	RDD285116	STD	177.5	169	5.03%		Pending

Standards Analyses

StandardID	Assay Name	Sample ID	Duplicate Number	Assay Value	Expected Value	% Diff	QAQC Status	Import Status
STD.OR-230	Cu_ME_MS61r_ppm	RDD285141	STD	173.5	169	2.66%		Pending
STD.OR-230	Cu_ME_MS61r_ppm	RDD285191	STD	172.5	169	2.07%		Pending
STD.OR-230	Nb_ME_MS61r_ppm	RDD285116	STD	3.4	3.39	0.29%		Pending
STD.OR-230	Nb_ME_MS61r_ppm	RDD285141	STD	3.4	3.39	0.29%		Pending
STD.OR-230	Nb_ME_MS61r_ppm	RDD285191	STD	3.3	3.39	-2.65%		Pending
STD.OR-230	Sc_ME_MS61r_ppm	RDD285116	STD	45.1	43.7	3.20%		Pending
STD.OR-230	Sc_ME_MS61r_ppm	RDD285141	STD	44.7	43.7	2.29%		Pending
STD.OR-230	Sc_ME_MS61r_ppm	RDD285191	STD	43.4	43.7	-0.69%		Pending
STD.OR-230	Ti_ME_MS61r_pct	RDD285116	STD	0.621	0.639	-2.82%		Pending
STD.OR-230	Ti_ME_MS61r_pct	RDD285141	STD	0.614	0.639	-3.91%		Pending
STD.OR-230	Ti_ME_MS61r_pct	RDD285191	STD	0.605	0.639	-5.32%		Pending
STD.OR-24d	As_ME_MS61r_ppm	RDD285166	STD	1.1	1.35	-18.52%		Pending
STD.OR-24d	Au_Au_ICP21_ppm	RDD285166	STD	0.003	0.001	200.00%	Error	Pending
STD.OR-24d	Cu_ME_MS61r_ppm	RDD285166	STD	40.3	43.2	-6.71%		Pending
STD.OR-24d	Nb_ME_MS61r_ppm	RDD285166	STD	45	44.6	0.90%		Pending
STD.OR-24d	Sc_ME_MS61r_ppm	RDD285166	STD	18.9	20	-5.50%		Pending
STD.OR-24d	Ti_ME_MS61r_pct	RDD285166	STD	1.175	1.22	-3.69%		Pending
STD.OR-46	As_ME_MS61r_ppm	RDD285091	STD	0.5	1.01	-50.50%	Warning	Pending
STD.OR-46	Au_Au_ICP21_ppm	RDD285091	STD	0.003	0.002	50.00%		Pending
STD.OR-46	Cu_ME_MS61r_ppm	RDD285091	STD	21.1	23.1	-8.66%	Error	Pending
STD.OR-46	Nb_ME_MS61r_ppm	RDD285091	STD	4.5	4.56	-1.32%		Pending
STD.OR-46	Sc_ME_MS61r_ppm	RDD285091	STD	8.7	8.75	-0.57%		Pending
STD.OR-46	Ti_ME_MS61r_pct	RDD285091	STD	0.204	0.207	-1.45%		Pending
STD.REN05	Sn_ME_XRF15b_pct	RDD285165	STD	2.72	2.68	1.49%		Pending
STD.REN06	Sn_ME_XRF15b_pct	RDD285190	STD	2.57	2.54	1.18%		Pending
STD.REN07	Sn_ME_XRF15b_pct	RDD285115	STD	1.215	1.17	3.85%		Pending
STD.REN07	Sn_ME_XRF15b_pct	RDD285140	STD	1.195	1.17	2.14%		Pending

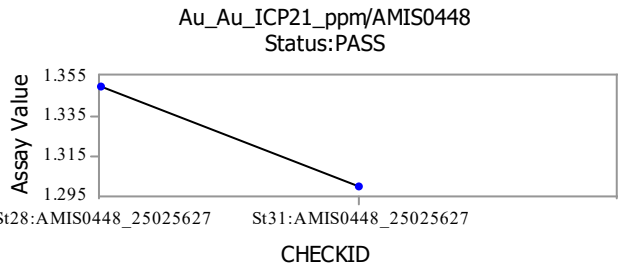
Blanks Analyses

StandardID	Assay Name	Sample ID	Duplicate Number	Assay Value	Expected Value	% Diff	QAQC Status	Import Status
REN_Blank	As_ME_MS61r_ppm	RDD285095	BLK	1.2				Pending
REN_Blank	As_ME_MS61r_ppm	RDD285108	BLK	1.6				Pending
REN_Blank	As_ME_MS61r_ppm	RDD285134	BLK	1.5				Pending
REN_Blank	As_ME_MS61r_ppm	RDD285162	BLK	1.8				Pending
REN_Blank	As_ME_MS61r_ppm	RDD285174	BLK	1.1				Pending
REN_Blank	As_ME_MS61r_ppm	RDD285185	BLK	1.7				Pending
REN_Blank	As_ME_MS61r_ppm	RDD285187	BLK	1.9				Pending
REN_Blank	Au_Au_ICP21_ppm	RDD285095	BLK	0.001				Pending
REN_Blank	Au_Au_ICP21_ppm	RDD285108	BLK	0.001				Pending
REN_Blank	Au_Au_ICP21_ppm	RDD285134	BLK	0.018				Pending
REN_Blank	Au_Au_ICP21_ppm	RDD285162	BLK	0.001				Pending
REN_Blank	Au_Au_ICP21_ppm	RDD285174	BLK	0.001				Pending
REN_Blank	Au_Au_ICP21_ppm	RDD285185	BLK	0.001				Pending
REN_Blank	Au_Au_ICP21_ppm	RDD285187	BLK	0.002				Pending
REN_Blank	Cu_ME_MS61r_ppm	RDD285095	BLK	3.1				Pending
REN_Blank	Cu_ME_MS61r_ppm	RDD285108	BLK	2.7				Pending
REN_Blank	Cu_ME_MS61r_ppm	RDD285134	BLK	2.5				Pending
REN_Blank	Cu_ME_MS61r_ppm	RDD285162	BLK	2.7				Pending
REN_Blank	Cu_ME_MS61r_ppm	RDD285174	BLK	3.6				Pending
REN_Blank	Cu_ME_MS61r_ppm	RDD285185	BLK	2.7				Pending
REN_Blank	Cu_ME_MS61r_ppm	RDD285187	BLK	3.2				Pending
REN_Blank	Nb_ME_MS61r_ppm	RDD285095	BLK	1.3				Pending
REN_Blank	Nb_ME_MS61r_ppm	RDD285108	BLK	1.2				Pending
REN_Blank	Nb_ME_MS61r_ppm	RDD285134	BLK	1.3				Pending
REN_Blank	Nb_ME_MS61r_ppm	RDD285162	BLK	1.3				Pending
REN_Blank	Nb_ME_MS61r_ppm	RDD285174	BLK	1.5				Pending
REN_Blank	Nb_ME_MS61r_ppm	RDD285185	BLK	1.4				Pending
REN_Blank	Nb_ME_MS61r_ppm	RDD285187	BLK	1.5				Pending
REN_Blank	Sc_ME_MS61r_ppm	RDD285095	BLK	0.3				Pending
REN_Blank	Sc_ME_MS61r_ppm	RDD285108	BLK	0.3				Pending
REN_Blank	Sc_ME_MS61r_ppm	RDD285134	BLK	0.2				Pending
REN_Blank	Sc_ME_MS61r_ppm	RDD285162	BLK	0.2				Pending
REN_Blank	Sc_ME_MS61r_ppm	RDD285174	BLK	0.2				Pending
REN_Blank	Sc_ME_MS61r_ppm	RDD285185	BLK	0.2				Pending
REN_Blank	Sc_ME_MS61r_ppm	RDD285187	BLK	0.2				Pending
REN_Blank	Sn_ME_XRF15b_pct	RDD285095	BLK	0.0025	0	Error!		Pending
REN_Blank	Sn_ME_XRF15b_pct	RDD285108	BLK	0.0025	0	Error!		Pending
REN_Blank	Sn_ME_XRF15b_pct	RDD285134	BLK	0.0025	0	Error!		Pending
REN_Blank	Sn_ME_XRF15b_pct	RDD285162	BLK	0.0025	0	Error!		Pending
REN_Blank	Sn_ME_XRF15b_pct	RDD285174	BLK	0.0025	0	Error!		Pending
REN_Blank	Sn_ME_XRF15b_pct	RDD285185	BLK	0.0025	0	Error!		Pending
REN_Blank	Sn_ME_XRF15b_pct	RDD285187	BLK	0.0025	0	Error!		Pending
REN_Blank	Ti_ME_MS61r_pct	RDD285095	BLK	0.044				Pending
REN_Blank	Ti_ME_MS61r_pct	RDD285108	BLK	0.045				Pending
REN_Blank	Ti_ME_MS61r_pct	RDD285134	BLK	0.042				Pending
REN_Blank	Ti_ME_MS61r_pct	RDD285162	BLK	0.047				Pending
REN_Blank	Ti_ME_MS61r_pct	RDD285174	BLK	0.048				Pending
REN_Blank	Ti_ME_MS61r_pct	RDD285185	BLK	0.046				Pending
REN_Blank	Ti_ME_MS61r_pct	RDD285187	BLK	0.049				Pending

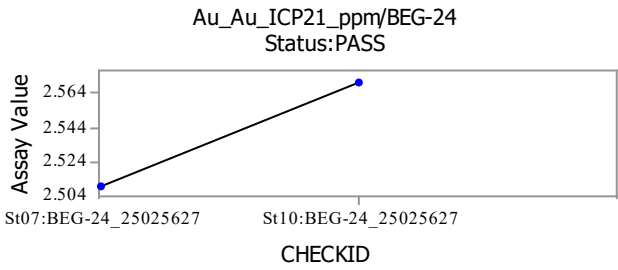
Duplicates/Repeats Analyses

Check Stage	Assay Name	Sample ID	Assay Value	Check ID	Duplicate Number	Check Value	MAPD	QAQC Status	Import Status
I	As_ME_MS61r_ppm	RDD285101	4660	Ch:RDD285101	EDGI_18	4650	0.21%		Pending
I	As_ME_MS61r_ppm	RDD285139	11.2	Ch:RDD285139	EDGI_18	10.2	9.35%	Warning	Pending
I	As_ME_MS61r_ppm	RDD285168	1.4	Ch:RDD285168	EDGI_18	0.8	54.55%	Error	Pending
I	Au_Au_ICP21_ppm	RDD285107	0.004	Ch:RDD285107	EDGI_18	0.003			Pending
I	Au_Au_ICP21_ppm	RDD285126	0.001	Ch:RDD285126	EDGI_18	0.001			Pending
I	Au_Au_ICP21_ppm	RDD285201	0.001	Ch:RDD285201	EDGI_18	0.001			Pending
I	Cu_ME_MS61r_ppm	RDD285101	337	Ch:RDD285101	EDGI_18	336	0.30%		Pending
I	Cu_ME_MS61r_ppm	RDD285139	0.9	Ch:RDD285139	EDGI_18	0.9			Pending
I	Cu_ME_MS61r_ppm	RDD285168	9.8	Ch:RDD285168	EDGI_18	10.4	5.94%	Warning	Pending
I	Cu_ME_MS61r_ppm	RDD285178	2.2	Ch:RDD285178	EDGI_18	2.9	27.45%	Error	Pending
I	Nb_ME_MS61r_ppm	RDD285101	26	Ch:RDD285101	EDGI_18	27.1	4.14%		Pending
I	Nb_ME_MS61r_ppm	RDD285139	86.6	Ch:RDD285139	EDGI_18	85.1	1.75%		Pending
I	Nb_ME_MS61r_ppm	RDD285168	8.8	Ch:RDD285168	EDGI_18	8.9	1.13%		Pending
I	Nb_ME_MS61r_ppm	RDD285178	2.9	Ch:RDD285178	EDGI_18	2.9			Pending
I	Sc_ME_MS61r_ppm	RDD285101	7	Ch:RDD285101	EDGI_18	7			Pending
I	Sc_ME_MS61r_ppm	RDD285139	11.4	Ch:RDD285139	EDGI_18	10.9	4.48%		Pending
I	Sc_ME_MS61r_ppm	RDD285168	5.2	Ch:RDD285168	EDGI_18	5.3	1.90%		Pending
I	Sc_ME_MS61r_ppm	RDD285178	2	Ch:RDD285178	EDGI_18	2			Pending
I	Sn_ME_XRF15b_pct	RDD285101	0.893	Ch:RDD285101	EDGI_18	0.887	0.67%		Pending
I	Sn_ME_XRF15b_pct	RDD285122	0.039	Ch:RDD285122	EDGI_18	0.035	10.81%	Error	Pending
I	Sn_ME_XRF15b_pct	RDD285146	0.034	Ch:RDD285146	EDGI_18	0.036	5.71%	Warning	Pending
I	Sn_ME_XRF15b_pct	RDD285167	0.012	Ch:RDD285167	EDGI_18	0.014			Pending
I	Sn_ME_XRF15b_pct	RDD285190	2.57	Ch:RDD285190	EDGI_18	2.58	0.39%		Pending
I	Ti_ME_MS61r_pct	RDD285101	0.194	Ch:RDD285101	EDGI_18	0.195	0.51%		Pending
I	Ti_ME_MS61r_pct	RDD285139	0.292	Ch:RDD285139	EDGI_18	0.295	1.02%		Pending
I	Ti_ME_MS61r_pct	RDD285168	0.163	Ch:RDD285168	EDGI_18	0.166	1.82%		Pending
I	Ti_ME_MS61r_pct	RDD285178	0.049	Ch:RDD285178	EDGI_18	0.047	4.17%		Pending

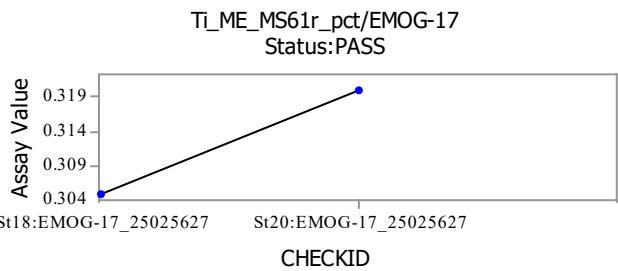
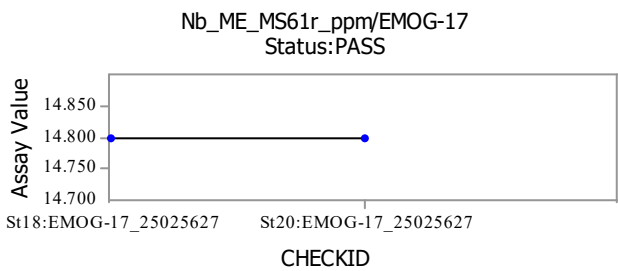
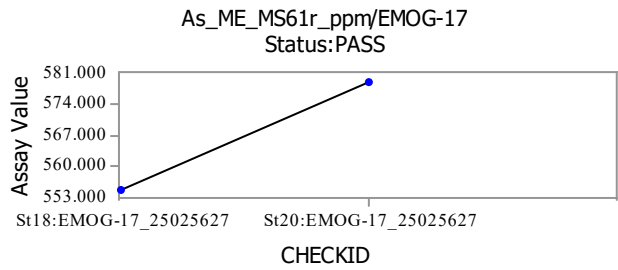
Standard: AMIS0448



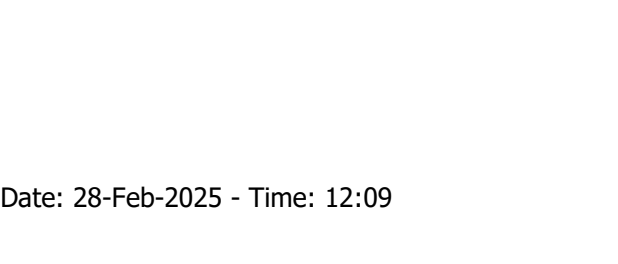
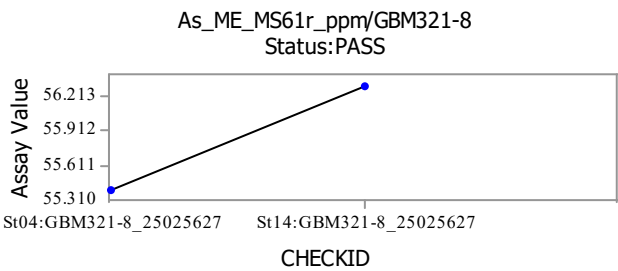
Standard: BEG-24

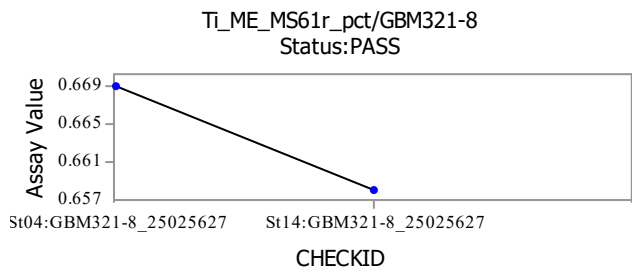
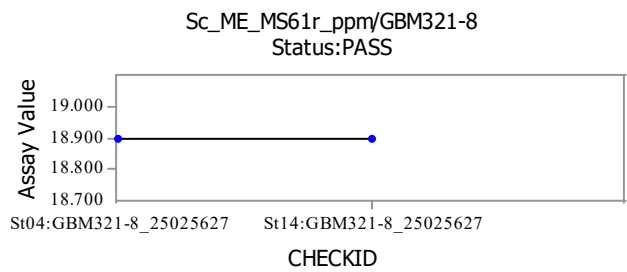
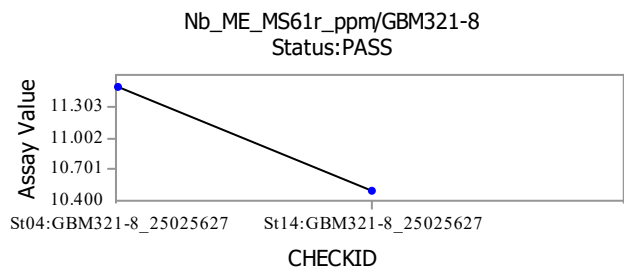


Standard: EMOG-17

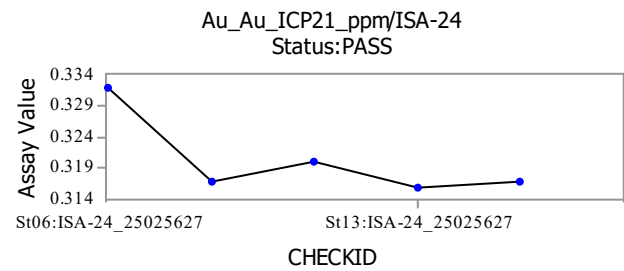


Standard: GBM321-8

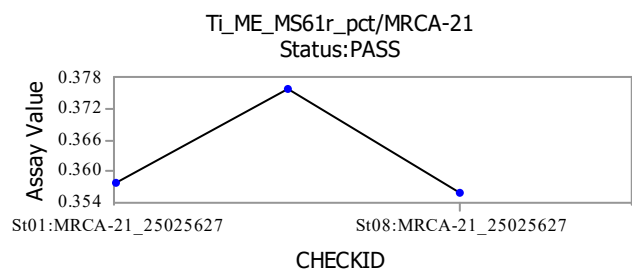
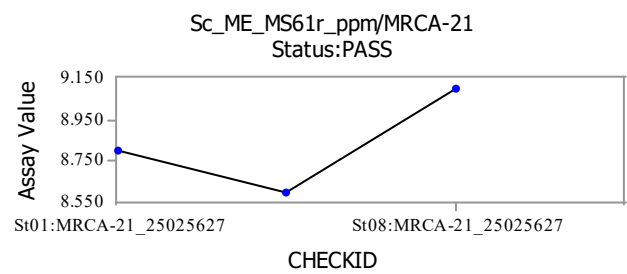
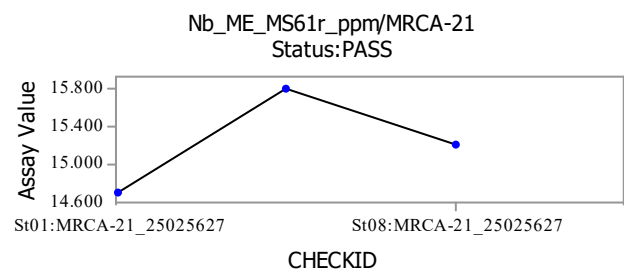
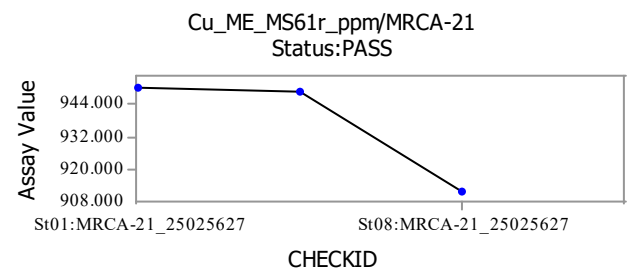
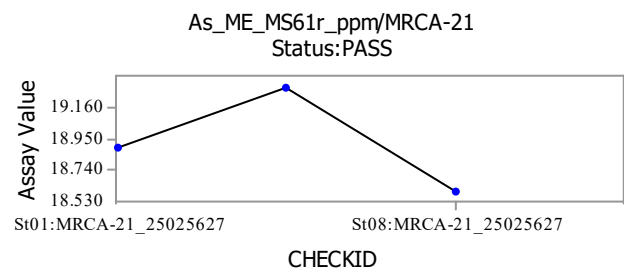




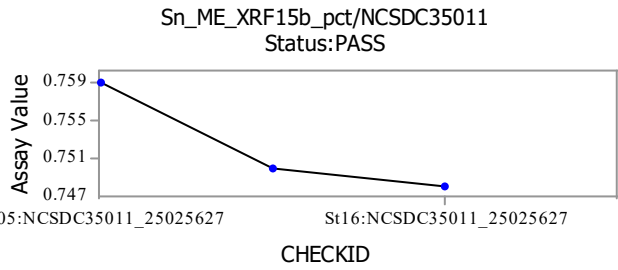
Standard: ISA-24



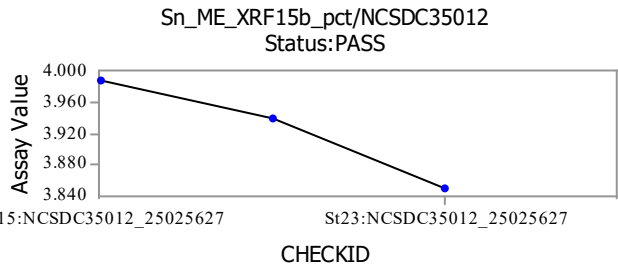
Standard: MRCA-21



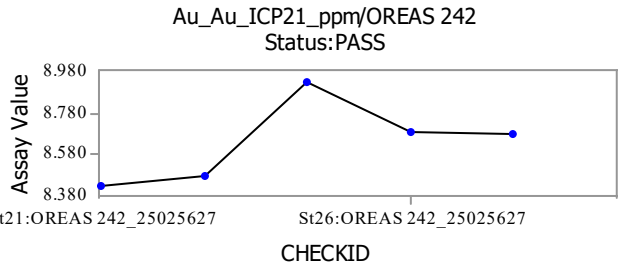
Standard: NCSDC35011



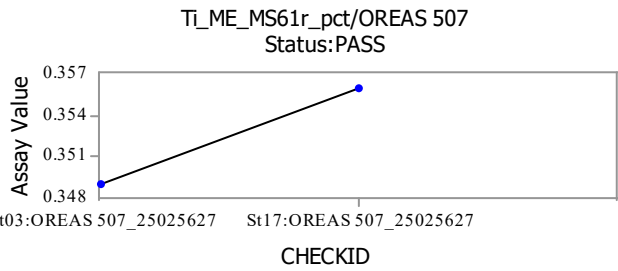
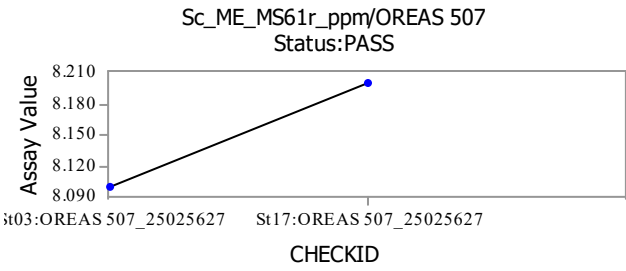
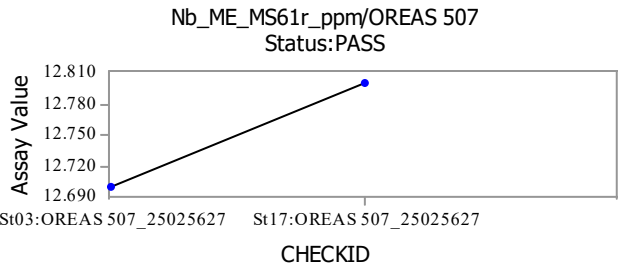
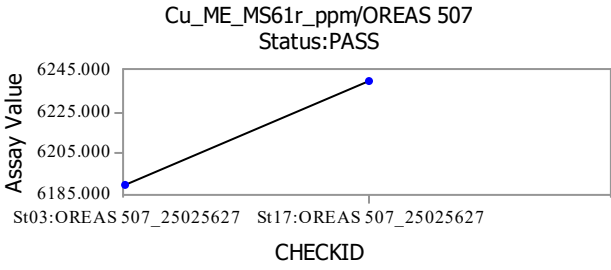
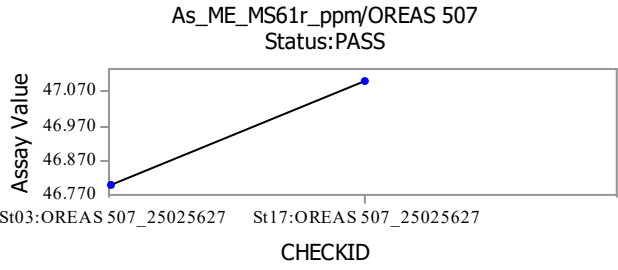
Standard: NCSDC35012



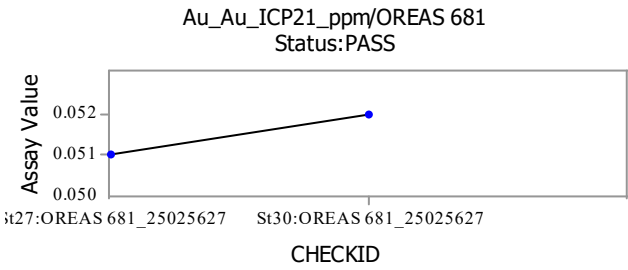
Standard: OREAS 242



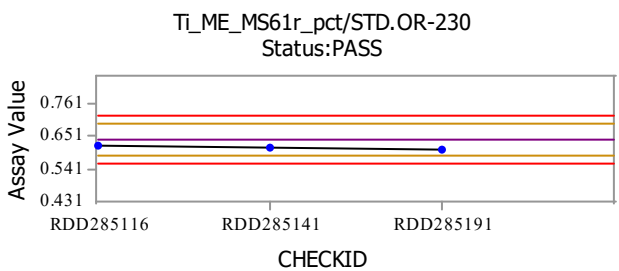
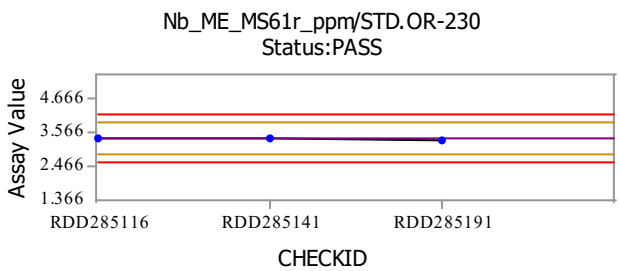
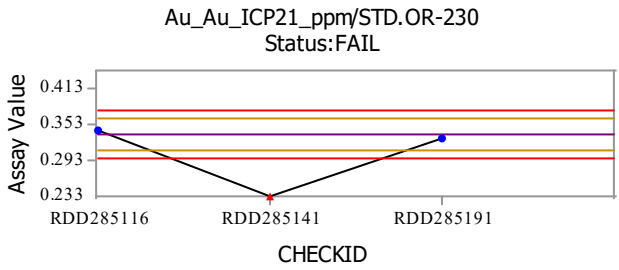
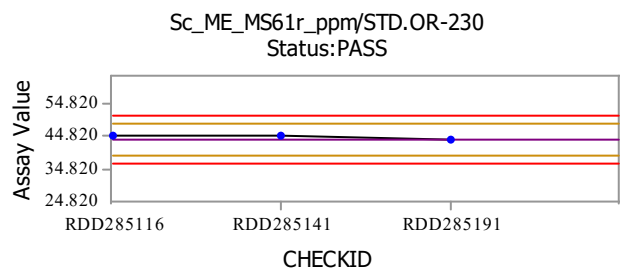
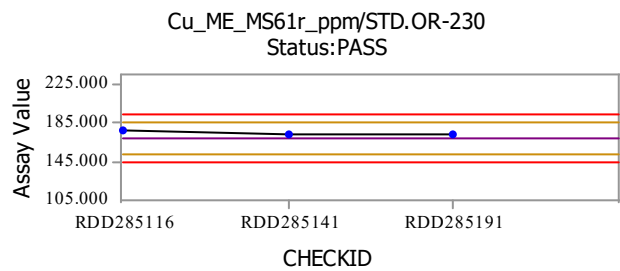
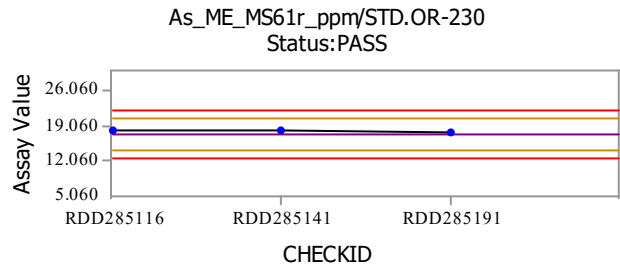
Standard: OREAS 507



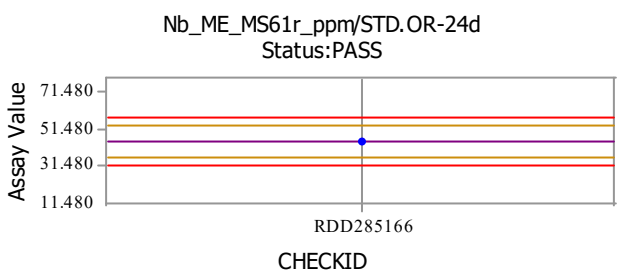
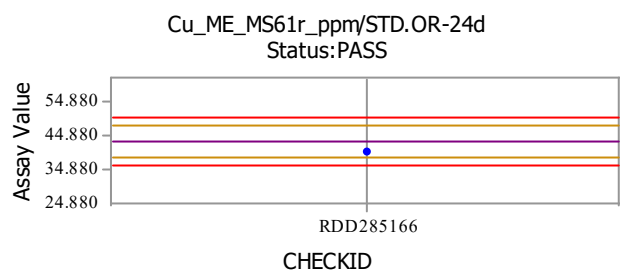
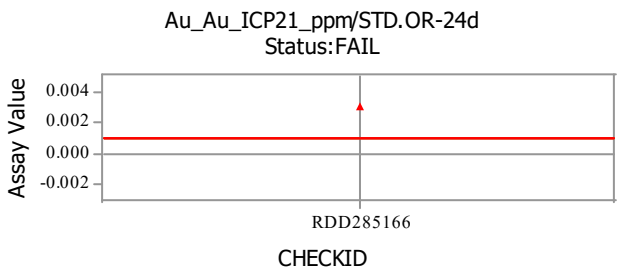
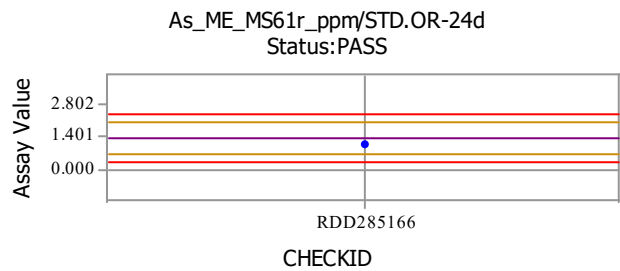
Standard: OREAS 681

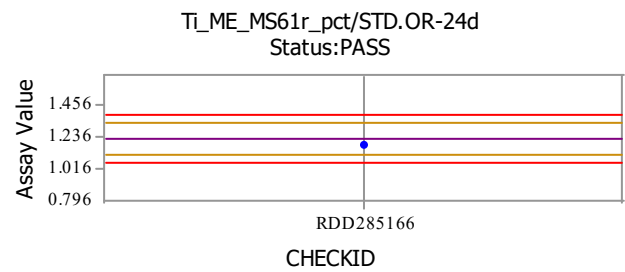
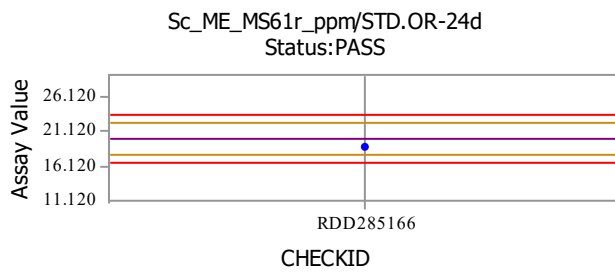


Standard: STD.OR-230

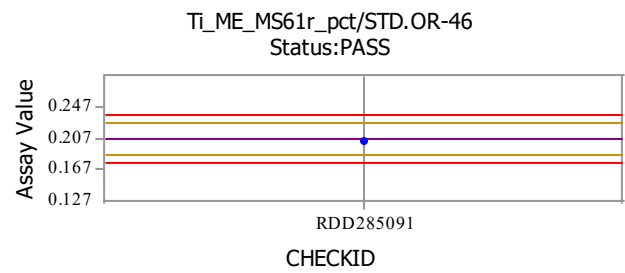
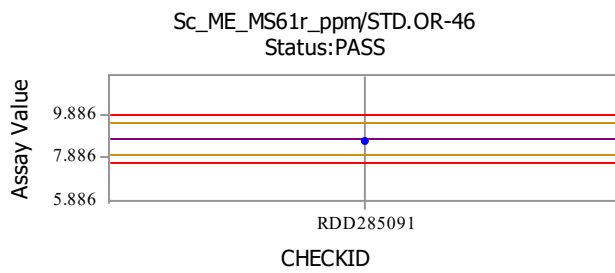
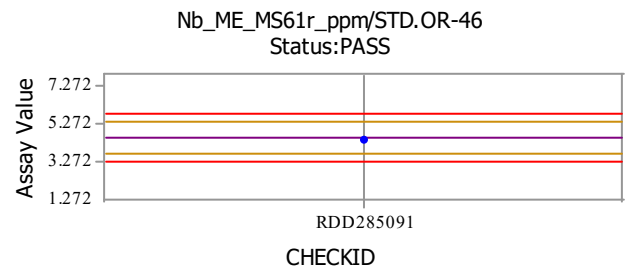
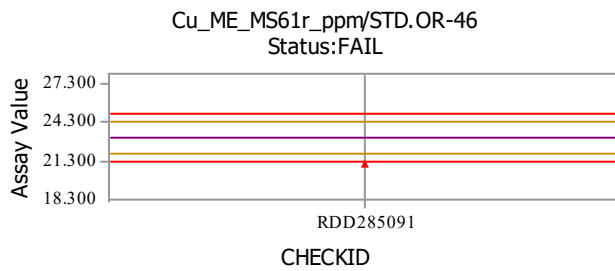
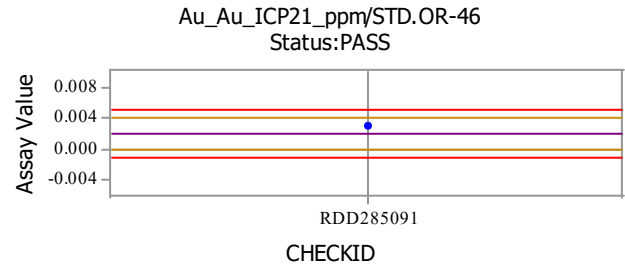
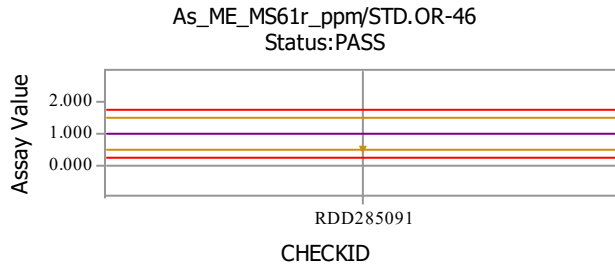


Standard: STD.OR-24d

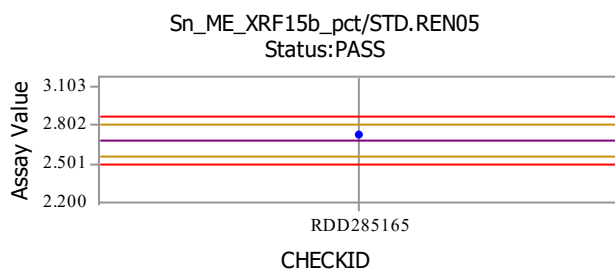




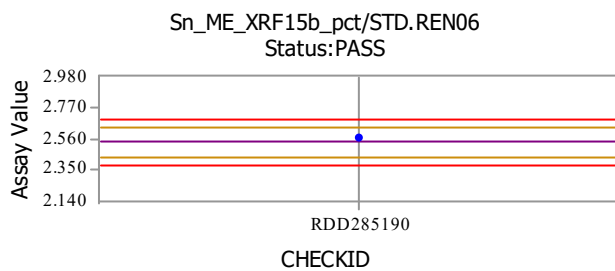
Standard: STD.OR-46



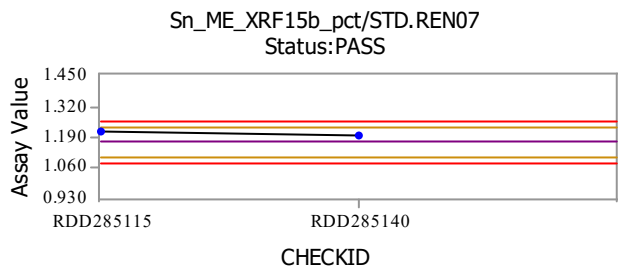
Standard: STD.REN05



Standard: STD.REN06



Standard: STD.REN07

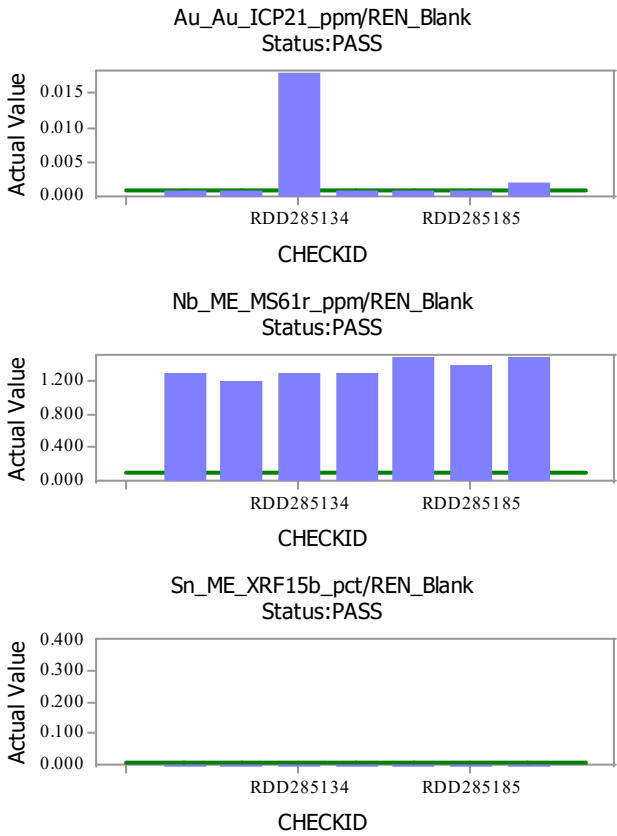
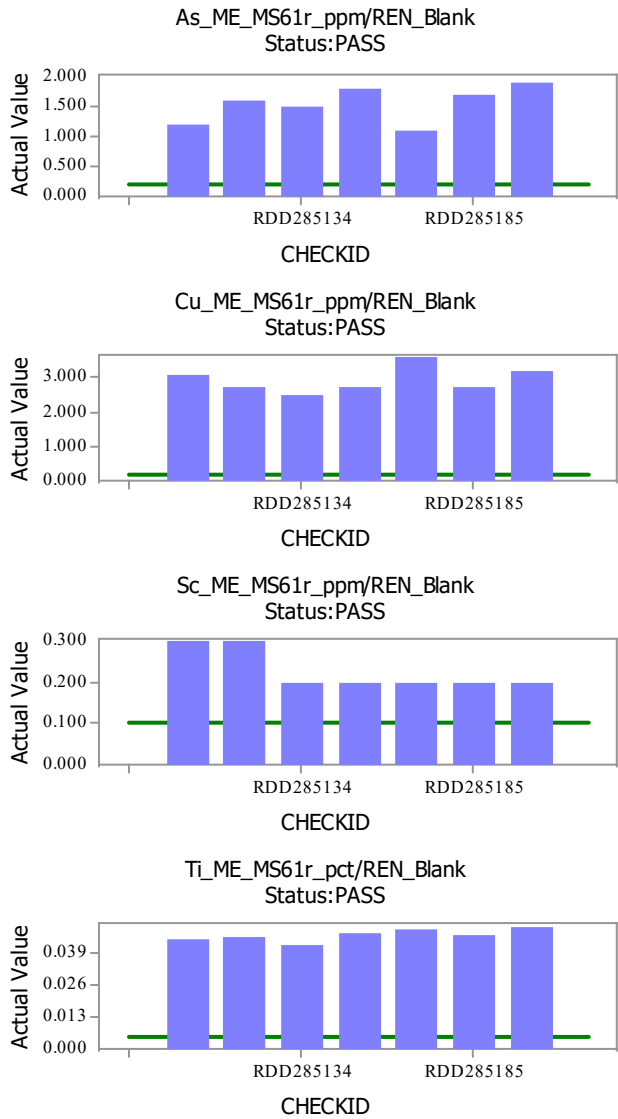


Standards Legend

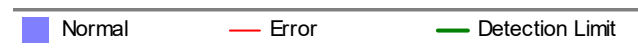
- | | |
|----------------|-----------|
| Expected Value | Warning |
| Error | Threshold |
| Error | Warning |
| Normal | |

Blank: ALS_BLANK

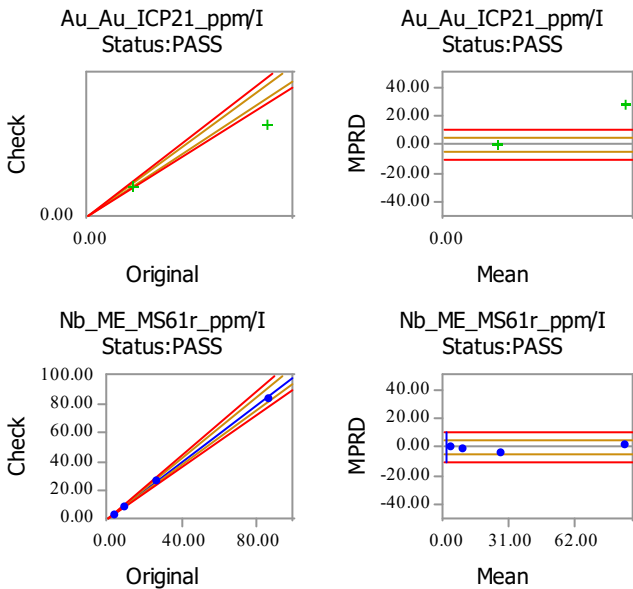
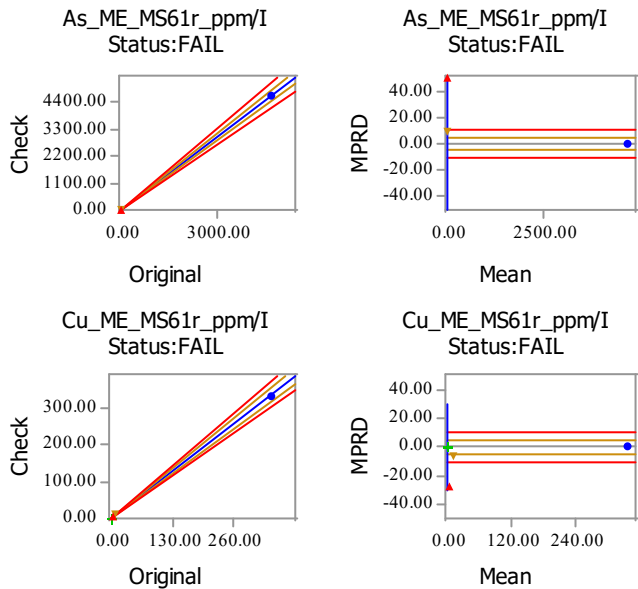
Blank: REN_Blank

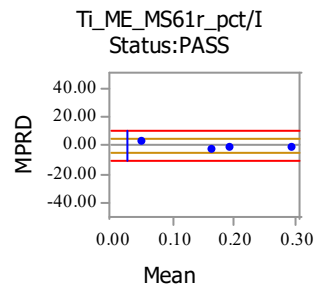
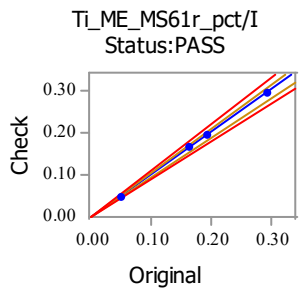
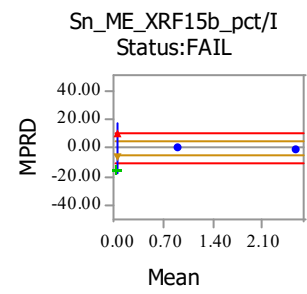
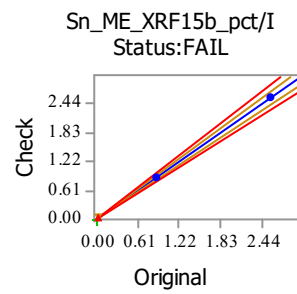
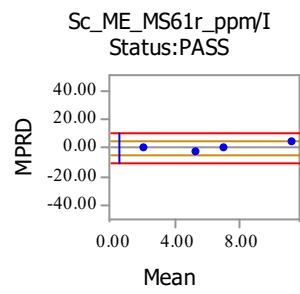
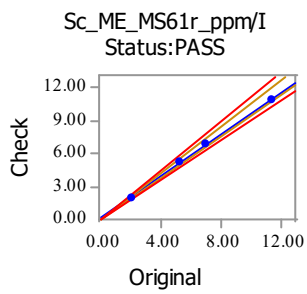


Blanks Legend



CheckStage: I





Duplicates Legend

- | | |
|------------------|-------------|
| — OLS Regression | — Warning |
| — Error | + Threshold |
| ● Normal | ▼ Warning |
| ▲ Error | |